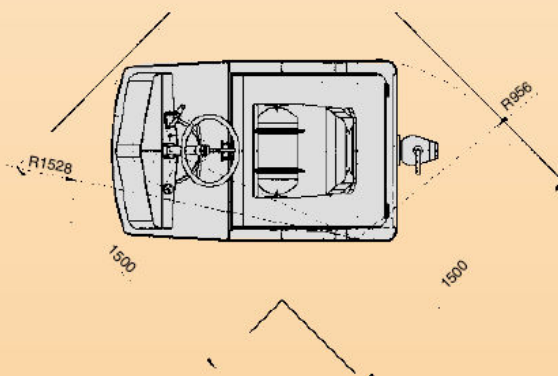
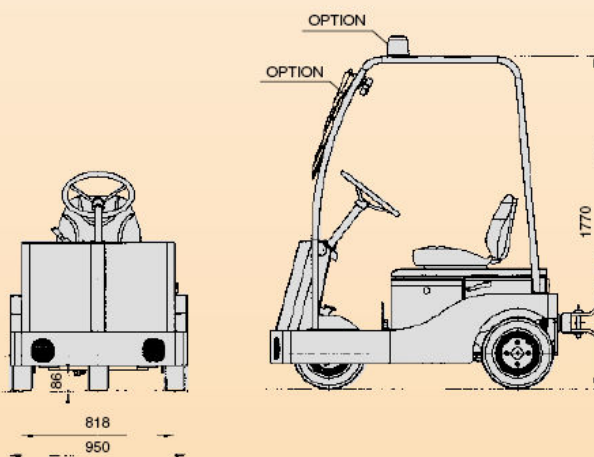
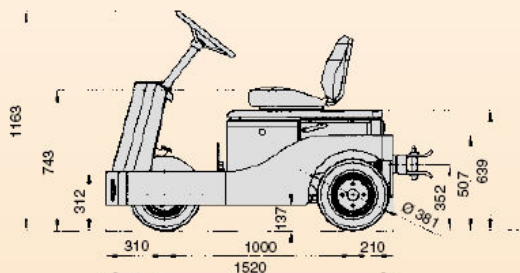




ELECTRIC TRACTOR TTE 40 AC

TOWING CAPACITY Kg. 4000



ELECTRIC TOW TRACTOR TTE 40 AC

Extremely compact, easy to drive, it can make a 180° conversion in less than 2,5 m. The “shock resistant” loading chassis is realised with high thickness plates, laser cut and electro-welded, permitting to have the best exploitation of the high torque performances offered by the AC motor.

Complete instrumentation: circuit lock key, check control for immediate detection of any fault or breakdown with function of hour counter and battery charge indicator, ergonomic motion/lights/horn switch.

Lights 2 front beams, rear tail and stop lights.

TTE 40 AC is available both in the basic version, as well as with an open cabin, equipped with glasses to approved standards and electrically operated wipers, for bad weather protection. A perimetrical plastic protection can increase operators' comfort.

Towing hook with pin, special and/or automatic hooks can be supplied as options.

Steering wheel: same dimensions as the rear ones, mounted on a fifth wheel of big diameter; low step on for a comfortable access to the driving place.

Rear axle: forms a unit with the motor/drive, mounted parallelly to the axis of the rear wheels, it is fixed to the frame with rubber silent-blocks
AC motor, brushless, closed execution with external ventilation system. Equipped with an encoder, a thermal sound and an electro-magnetic brake with manual unlock device.

Speed control through a three-phase microprocessor inverter with regenerative braking. Programmer interface (not delivered with the unit).

“Man on board” device, under seat or, on request, with pedal

Service brake automotive type, with brake pedal and pump casing, acting on rear wheels with drums.

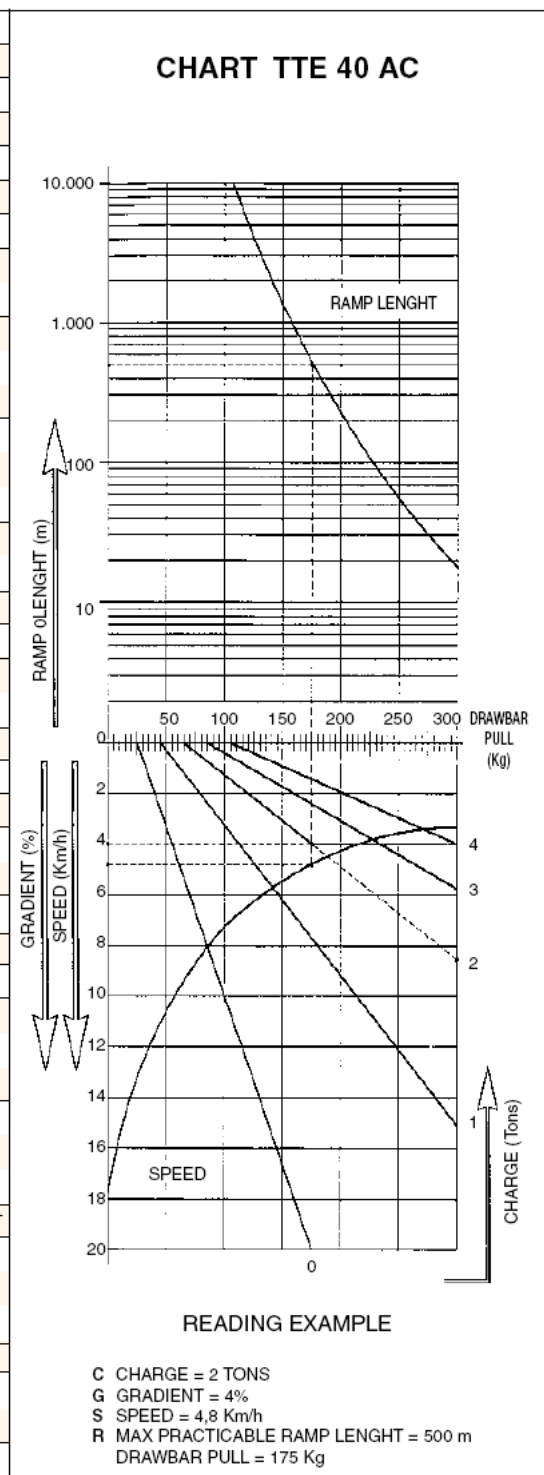
Electric braking, preset, operating automatically when accelerator pedal is released, with brake pedal's first stroke, and on reversing direction.

Parking and emergency brake, electro-magnetic type: the tractor is normally braked with electronic control.

Standard **paint finish:** RAL 7021/7035 grey; upon request, other colours available (optional).

All SIMAI units are manufactured and certified in compliance with the Machine Directive and bear the CE mark.

FEATURES	1	Manufacturer	SIMAI SpA		
	2	Model	TTE 40 AC		
	3	Towing Capacity	4		
	4	Power supply	ELECTRIC		
	5	Type of control	SITTING DRIVER		
	6	Tyre equipment	PN= Pneumatic SE=Superelastic	PN/SE	
	7	Wheels	front/rear nr X-motive wheels	1/2X	
	8	Platform size	length x width	mm.	-
	9	Platform height		mm.	-
DIMENSIONS	10	length	mm.	1520	
	11	Overall dimension	width	mm.	950
	12	height steering wheel	mm.	1163	
	13	Turning radius	R1 front	mm.	1528
	14		R2 rear	mm.	956
	15		R3 inner	mm.	-
	16	Aisle width	L1 fore 90°	mm.	1500
	17		L2 rear 90°	mm.	1500
	18	Wheelbase		mm.	1000
	19	Track	front/rear	mm.	-/818
PERFORMANCES	20	Ground Clearance	laden lowest point	mm.	86
	21		centre	mm.	137
	22	Speed	travel unladen/laden	Km/h.	15/7
	23	Drawbar pull	per hour	Kg.	90
	24	Max Drawbar pull	acceleration	Kg.	320
	25	Gradeability	max unladen		
			max laden		see the chart
	26	Autonomy	50% unladen 50% laden	Km.	35
	27	Weight uladen	standard battery included	Kg.	710
	28	Axle loading	front/rear	Kg.	290/420
	29		front/rear	n°	1/2
	30	Tyre equipment	dimensions front		15x4,5x8
	31		dimensions rear		15x4,5x8
	32		service-parking		FOOT/ELECTR.
	33	Brakers	mec. (M) hydr. (H) electr. (E)		I/E
34		type		DRUM	
35	Suspensions	axle front/rear		RIGID /RUBBER ELASTIC SUPPORT	
TRANSMISSION	36		Vt/Amper hour	V/Ah.	24/330/390
	37	Battery	Weight	Kg.	320
	38		type		ARMOURED
	39	Motor	drive: power rate S2=60'	KW	2 AC
	40	Speed control	type		INVERTER
	41		nr. gear speed forward/reverse		1-1
	42	Trasmission	type		RED. GEAR



Dimensions are not binding and can be changed in any moment. The performances must be intended for brand new machines, after having completed the running-in tested in Milan Factory in normal climatic conditions. Performances and weight are to be intended with standard motors and battery (reported in bold) and with pneumatic tyres. Some data can vary according to different equipments.