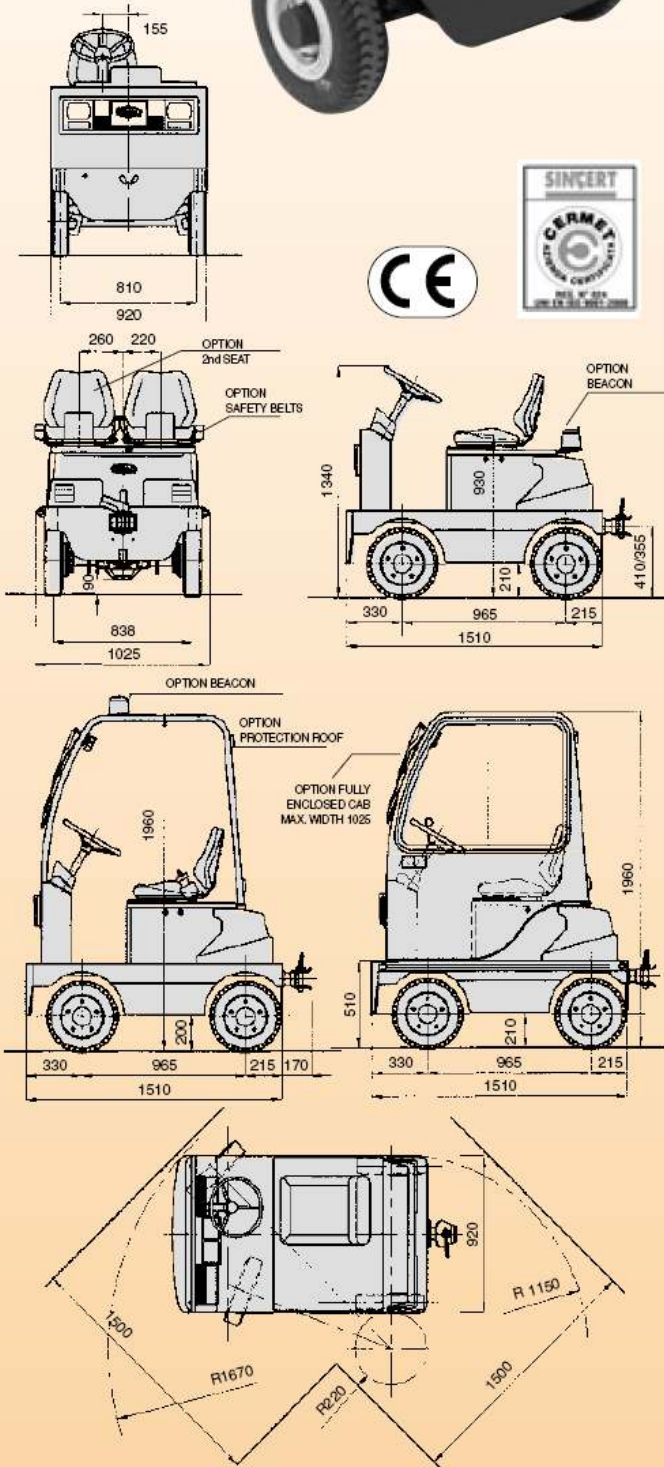




ELECTRIC TRACTOR TE 70 AC

TOWING CAPACITY Kg. 7000



ELECTRIC TOW TRACTOR TE 70 AC

Extremely compact, easy to drive, with turning radius similar to three-wheeled vehicles. Equipped with elastic suspensions on both front and rear axles, with steel helical springs enclosed in rubber.

Complete instrumentation: circuit lock key, hour counter, battery charge indicator, check control for immediate detection of any fault or breakdown, lights switch, turn indicators, power steering (option) motor brushes wear pilot light, dc/dc converter warning light (optional: electrolyte level gauge – Level Check)

Lights complete, automobile type.

Secondary circuit, 24 V, from battery with DC/DC converter.

TE 70 AC is available both in the basic version, as well as with an **open cabin, equipped with glasses** to approved standards and electrically operated wipers, **for bad weather protection. 2 steel doors with sliding windows** or a perimetrical plastic protection can increase operators' comfort.

Towing hook with pin, special and/or automatic hooks can be supplied as options.

Front axle: mounted on swinging arm with rubber supports, elastically attached to the frame by rubberised helical steel springs.

Rear axle: forms a unit with the motor/drive, mounted on the swinging arm and elastically attached to the frame in the same way as the front axle.

AC motor, brushless, closed execution with external ventilation system. Equipped with an encoder, a thermal sound and an electro-magnetic brake with manual unlock device.

Speed control through a three-phase microprocessor inverter with regenerative braking. Programmer interface (not delivered with the unit).

Fibreglass rear hood easy to remove to access to the electronic panel.

"Man on board" device, with pedal or, on request, under seat.

Service brake with brake pedal and double pump casing, acting on all 4 wheels with expansion-type braking blocks.

Electric braking, preset, operating automatically when accelerator pedal is released, with brake pedal's first stroke, and on reversing direction.

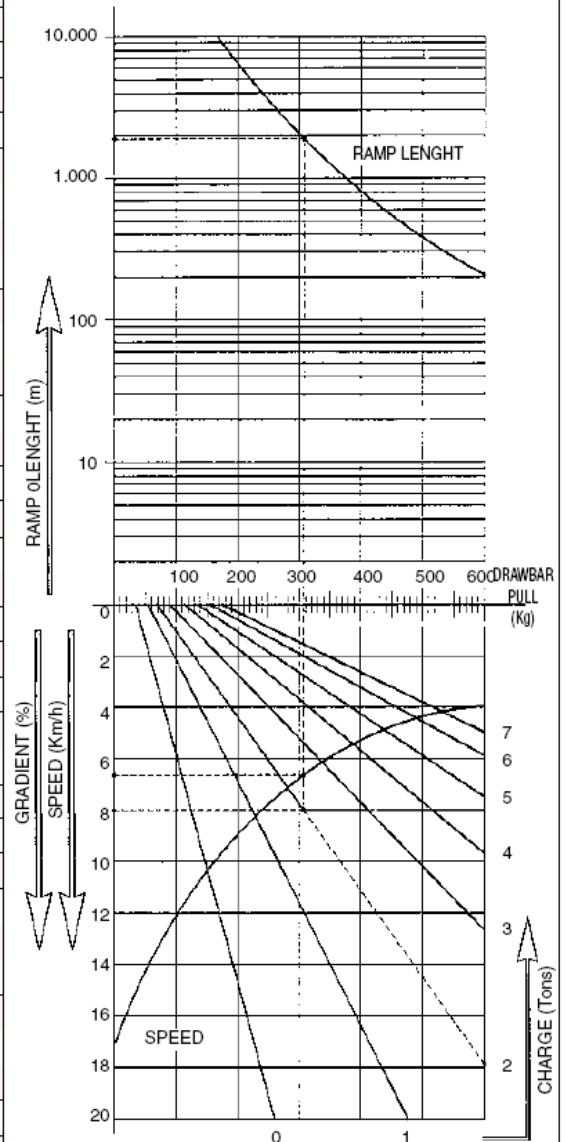
Parking and emergency brake, electro-magnetic type: the tractor is normally braked with electronic control.

Standard paint finish: RAL 7021/7035 grey; upon request, other colours available (optional).

All SIMAI units are manufactured and certified in compliance with the Machine Directive and bear the CE mark.

FEATURES	1	Manufacturer	SIMAI SpA		
	2	Model	TE 70 AC		
	3	Towing Capacity	nominal	t	7
	4	Power supply	ELECTRIC		
	5	Type of control	SITTING DRIVER		
	6	Tyre equipment	PN= Pneumatic SE=Superelastic	PN/SE	
	7	Wheels	front/rear nr	X-motive wheels	2/2X
	8	Platform size	length x width	mm.	-
DIMENSIONS	9	Platform height	mm.	-	
	10		length	mm.	1510
	11	Overall dimension	width	mm.	920
	12		height	mm.	1960
	13		height steering wheel	mm.	1340
	14	Turning radius	R1 front	mm.	1670
	15		R2 rear	mm.	1150
	16		R3 inner	mm.	220
	17	Aisle width	L1 fore 90°	mm.	1500
	18		L2 rear 90°	mm.	1500
	19	Wheelbase		mm.	965
	20	Track	front/rear	mm.	810-838
	21	Ground Clearance	laden lowest point	mm.	90
	22		centre	mm.	210
PERFORMANCES	23	Speed	travel unladen/laden	Km/h.	15/9
	24	Drawbar pull	per hour	Kg.	185
	25	Max Drawbar pull	acceleration	Kg.	600
	26	Gradeability	max unladen		
			max laden		see the chart
	27	Autonomy	50% unladen 50% laden	Km.	40
	28	Weight uladen	standard battery included	Kg.	975
	29	Axle loading	front/rear	Kg.	405/570
	30		front/rear	n°	2/2
	31	Tyre equipment	dimensions front		4.00-8
	32		dimensions rear		4.00-8
	33		service - parking		FOOT/HAND
	34	Brakers	mechanical (M) hydraulic (H) electr. (E)		∕E
	35		type		DRUM
36	Suspensions	axle front/rear		HELIC SPRINGS	
TRANSMISSION	37		Volt/Amper hour	V/Ah.	48-220/260/275/325
	38	Battery	Weight	Kg.	438/465/515/545
	39		type		ARMOURED
	40	Motor	drive: power rate S2=60'	KW	5 ac
	41		hydr. steering: power rate S2=60'	KW	1,2
	42	Speed control	type		STEPLESS
	43		nr. gear speed forward/reverse		1-1
	44	Trasmission	type		RED. GEAR

CHART TE 70 AC



READING EXAMPLE

C CHARGE = 2 TONS
 G GRADIENT = 8%
 S SPEED = 6,6 Km/h
 R MAX PRACTICABLE RAMP LENGHT = 1800 m
 DRAWBAR PULL = 308 Kg

Dimensions are not binding and can be changed in any moment. The performances must be intended for brand new machines, after having completed the running-in tested in Milan Factory in normal climatic conditions. Performances and weight are to be intended with standard motors and battery (reported in bold) and with pneumatic tyres. Some data can vary according to different equipments.