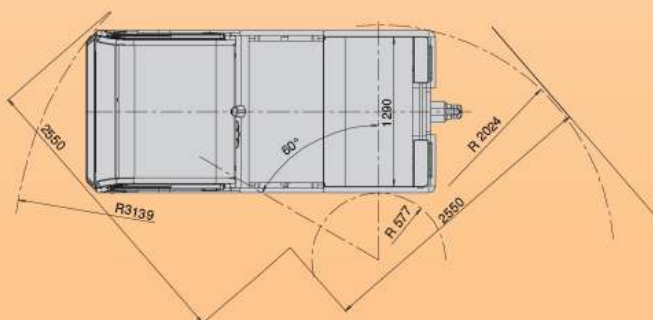
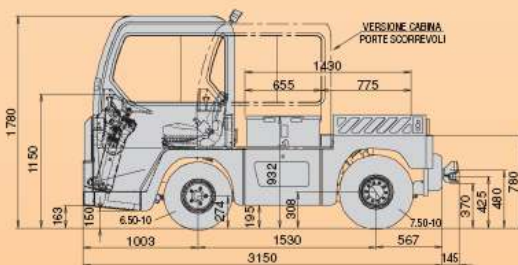
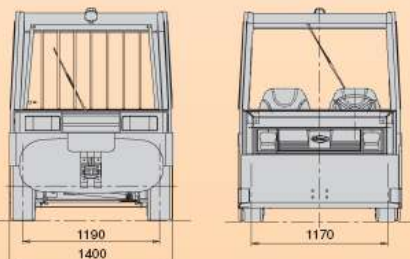
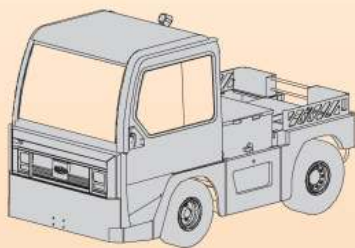




ELECTRIC TRACTOR TE 250 RR

TOWING CAPACITY Kg. 25000



ELECTRIC INDUCTION-MOTOR TRUCK TE250RR

Heavy-duty high-performance and long-range truck, for continuous service.

The **driver's seat is located forwards**, over large-sized wheels, and ensures **high front and rear visibility** under maximum safety and best comfort conditions.

The **ideal weight distribution** and the **anti-pitch large wheel base** make it possible to avoid pitching under maximum towing conditions and improve stability.

The shock-resistant **supporting-type chassis** in thick oxygen-lance cut plate increases grip and allows for maximum exploitation of the induction motor.

The **TE 250 RR** truck may be equipped with a closed cabin with glass windshield to approved standards, front and rear electrically operated wipers and 2 easy-to-remove car-like chassis-hinged side doors or with sliding doors.

The **battery box**, equipped with an automatic battery coupling device, is located beyond the cabin, in a lower position, thus highly improving stability.

A small platform is located above the battery.

High-performance hollow-shaft **electric induction motor**, integrated in the driveline via cascade reduction gears and epicyclic reduction gears on the wheels. Speed measurement via gear sensor.

Speed control with **electronic HF Mosfet variator** with battery energy recovery.

"Man on board" device under seat or, upon request, with pedal.

Standard **hydraulic steering**.

Adjustable front and rear air-spring **suspensions** with shock absorbers and stabilizer bar.

Service **brake** with brake pedal and MiniServo double pump casing, acting on all 4 wheels with split circuit. Front disk brake with Brembo 4-cylinder callipers and easy-to-access oil-immersed rear multidisk brake.

Mechanical lever-type parking and emergency brake.

Complete instrumentation on adjustable telescopic steering column, including: circuit lock key, hour counter, battery charge indicator, lights switch, turn indicators, handbrake warning light, motor brush wear pilot light, rear control consent for slow approach.

Complete car-like shockproof **lights**. Anticollision lights.

24 V secondary circuit, from battery with DC/DC converter.

Automatic **tow hook** to approved standards, with pin.

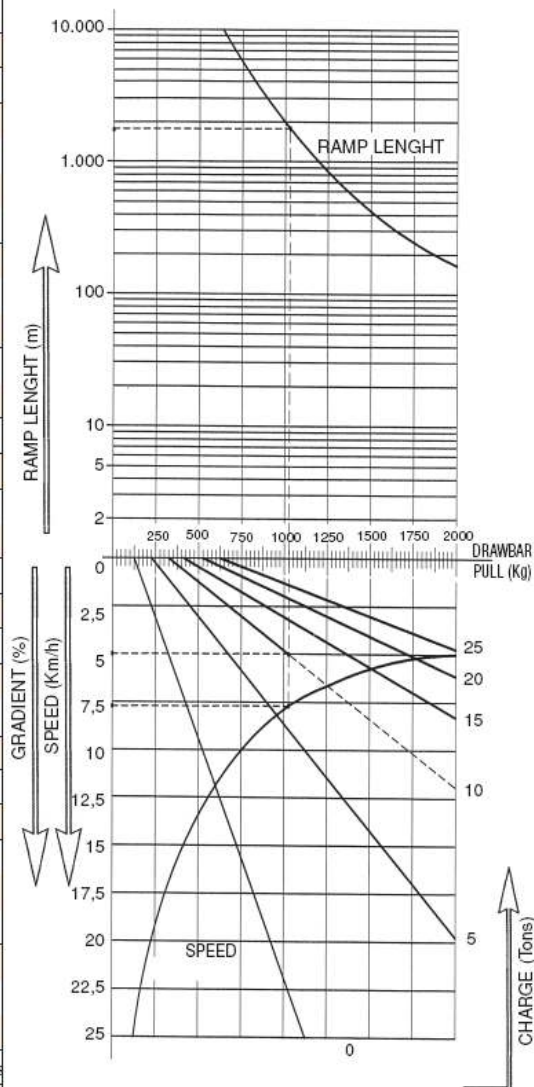
Rear control for slow approach (FORWARD/REVERSE) to ease docking operations.

Standard paint finish: RAL 7021/7035 grey; other colours available upon request (optional).

All SIMAI trucks are manufactured and certified in compliance with the Machine Directive and bear the CE mark.

FEATURES	1	Manufacturer	SIMAI SpA		
	2	Model	TE 250 RR		
	3	Towing capacity	S2=60' - S2=30'	t	25/30
	4	Power supply	ELECTRIC AC		
	5	Type of control	SITTING DRIVER		
	6	Tyre equipment	PN= Pneumatic SE=Superelastic	PN/SE	
	7	Wheels	front/rear nr X-motive wheels	2/2X	
	8	Platform size	length x width	mm.	1290X775
DIMENSIONS	9	Platform height	mm.	780	
	10	length	mm.	3150	
	11	Overall dimension	width	mm.	1400
	12	height	mm.	1780	
	13	height steering wheel	mm.	1150	
	14	Turning radius	R1 front	mm.	3139
	15		R2 rear	mm.	2024
	16		R3 inner	mm.	577
	17	Aisle width	L1 fore 90°	mm.	2550
	18		L2 rear 90°	mm.	2550
	19	Wheelbase		mm.	1530
	20	Track	front/rear	mm.	1170/1190
	21	Ground Clearance	laden lowest point	mm.	150
	22		centre	mm.	195
PERFORMANCES	23	Speed	travel unladen/laden	Km/h.	25/12
	24	Drawbar pull	per hour	Kg.	600
	25	Max Drawbar pull	acceleration	Kg.	1900
	26	Gradeability	max unladen	%	
			max laden	%	see the chart
	27	Autonomy	50% unladen 50% laden	Km.	45
	28	Weight unladen	standard battery included	Kg.	3950
	29	Axle loading	front/rear	Kg.	2050/1900
	30		front/rear	n°	2/2
	31	Tyre equipment	dimensions front	6.50.10	
	32		dimensions rear	7.50.10	
	33		service-parking	FOOT/HAND	
	34	Brakes	mechanical (M) hydraulic (l)	l/M	
	35		type	Disk/multiple disks	
36	Suspensions	axle front/rear	air Torpress type/shock absorbers		
TRANSMISSION	37	Volt/Amper hour	V/Ah.	80/500-560-620	
	38	Battery	Weight	Kg.	1500-1550-1600
	39		type	ARMOURED	
	40	Motor	drive: power rate S2=60'	KW	18 AC
	41		hydr. steering: power rate S2=60'	KW	1
	42	Speed control	type	INVERTER	
	43		nr. gear speed forward/reverse	1-1	
	44	Trasmission	type	monobloc w/motor w/hollow shaft	

CHART TE 250 RR



READING EXAMPLE

CHARGE = 10 TONS
 GRADIENT = 5%
 SPEED = 7,7 Km/h
 MAX PRACTICABLE RAMP LENGHT = 1600 m
 DRAWBAR PULL = 1025 Kg

Dimensions are not binding and can be changed in any moment. The performances must be intended for brand new machines, after having completed the running-in tested in Milan Factory in normal climatic conditions. Performances and weight are to be intended with standard motors and battery (reported in bold) and with pneumatic tyres. Some data can vary according to different equipments.