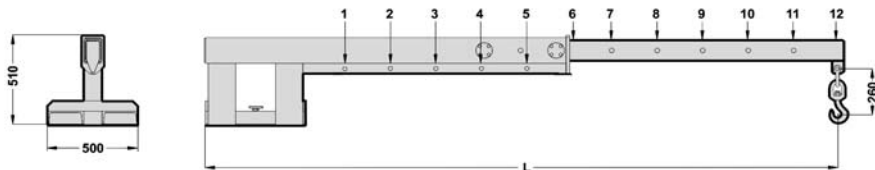


## 9.2.1 Brazo Grúa sobre Horquillas Telescópico Telescopic Crane Arm on Forks



Modelo	D mm	P Kg.	€										
BK25C200	160x60	158	2.500										
Posición	1	2	3	4	5	6	7	8	9	10	11	12	Position
Distancia L/mm.	765	1015	1265	1515	1765	2030	2270	2510	2710	2990	3230	3470	Distance L/mm.
Cap. Carga Kg.	3300	2500	2000	1600	1400	1200	920	830	760	700	650	600	L. Capacity Kg.
C. Gravedad CGH/mm.	445	445	445	445	445	445	485	525	565	605	645	685	C. Gravity CGH/mm.

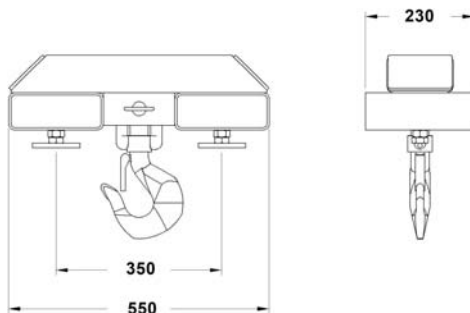
### Notas

D = Máxima sección de horquilla.

### Notes

D = Maximum section of fork.

## 9.2.2 Brazo Grúa sobre Horquilla Crane Arm on Forks



Modelo	Q Kg.	D mm	P Kg.	€
BA25C500K	2500	180x60	23	950

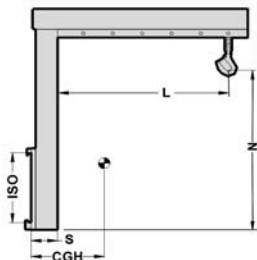
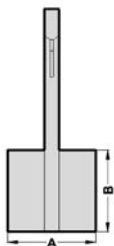
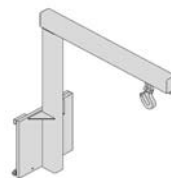
### Notas

Q = Capacidad de carga.  
D = Máxima sección de horquilla.

### Note s

Q = Loading capacity.  
D = Maximum section of fork.

## 9.3 Brazo Grúa Crane Arm



Modelo	Q / 600 Kg./mm	Q / 800 Kg./mm	Q / 1000 Kg./mm	Q / 1200 Kg./mm	A-B mm	L mm	N mm	CGH mm	S mm	P Kg.	ISO	€
BA15B120	1500	1125	900	750	500-500	1200	1000	145	140	110	2	1.400
BA25B120	2500	1875	1500	1250	500-500	1000	1200	166	145	165	2	1.700
BA40B120	4000	3000	2400	2000	600-600	1000	1200	185	170	210	3	1.900
BA60B120	6000	4500	3600	3000	600-750	1000	1200	218	175	280	4	2.900

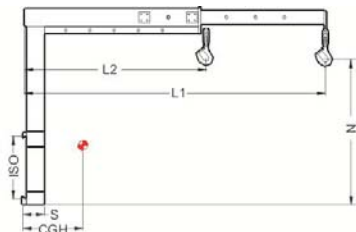
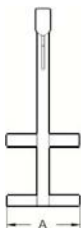
### Opciones

Anclaje rápido		
FEM 2/3		440 €
FEM 4		660 €
Otras capacidades.	Consultar	
Mayor longitud.	Consultar	
Cada 100 m/m +		
Mod. BA15	+ 30 €	
Mod. BA25	+ 40 €	
Mod. BA40	+ 60 €	
Mod. BA60	+ 70 €	
Q = Capacidad de carga.		

### Options

Quick mounting.		
FEM 2/3		440 €
FEM 4		660 €
Other capacities.	Consulting	
A greater length.	Consulting	
Every 100 m/m +		
Mod. BA15	+ 30 €	
Mod. BA25	+ 40 €	
Mod. BA40	+ 60 €	
Mod. BA60	+ 70 €	
Q = Loading capacity.		

## 9.4 Brazo Grúa Telescópico Crane Arm Telescopic



Modelo	Q Kg.	CC mm	A mm	L1-L2 mm	N mm	CGH mm	S mm	P Kg.	ISO	€
BA15D135	820	1350	500	1350-2200	1000	380	120	150	2-3	3.000
BA25D135	1400	1350	500	1350-2200	1000	360	140	190	3	3.200
BA40D135	2350	1350	600	1350-2200	1200	350	160	245	3-4	3.600
BA60D135	3650	1350	600	1350-2200	1200	450	200	350	4	5.000
BA80D135	5000	1350	800	1350-2200	1200	443	220	380	4	6.000

### Opciones

Anclaje rápido		
FEM 2/3		440 €
FEM 4		660 €
Otras capacidades.		Consultar
Mayor longitud.		Consultar
Cada 100 m/m +		
Mod. BA15	+ 60 €	
Mod. BA25	+ 75 €	
Mod. BA40	+ 90 €	
Mod. BA60	+ 125 €	
Mod. BA80	+ 200 €	
Q = Capacidad de carga.		

### Options

Quick mounting.		
FEM 2/3		440 €
FEM 4		660 €
Other capacities.		Consulting
A greater length.		Consulting
Every 100 m/m +		
Mod. BA15	+ 60 €	
Mod. BA25	+ 75 €	
Mod. BA40	+ 90 €	
Mod. BA60	+ 125 €	
Mod. BA80	+ 200 €	
Q = Loading capacity.		